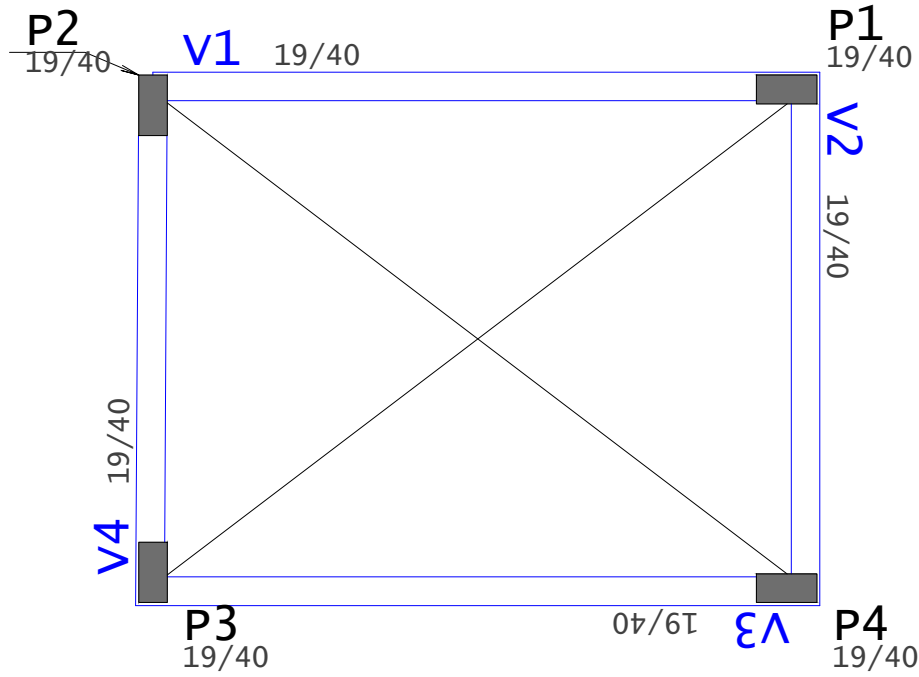
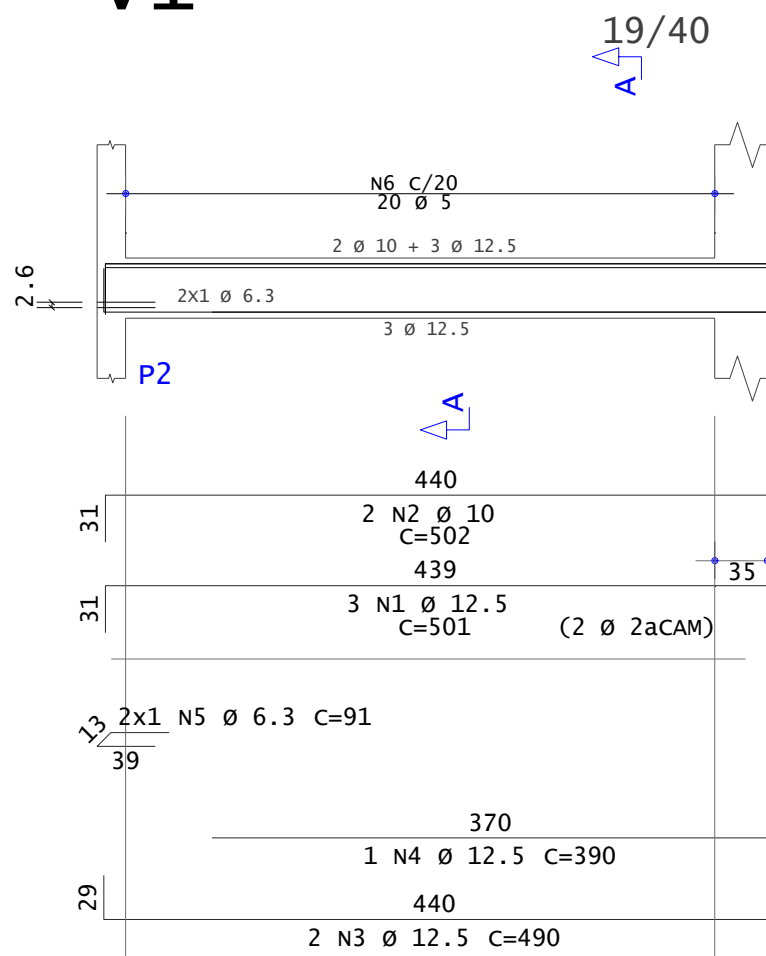


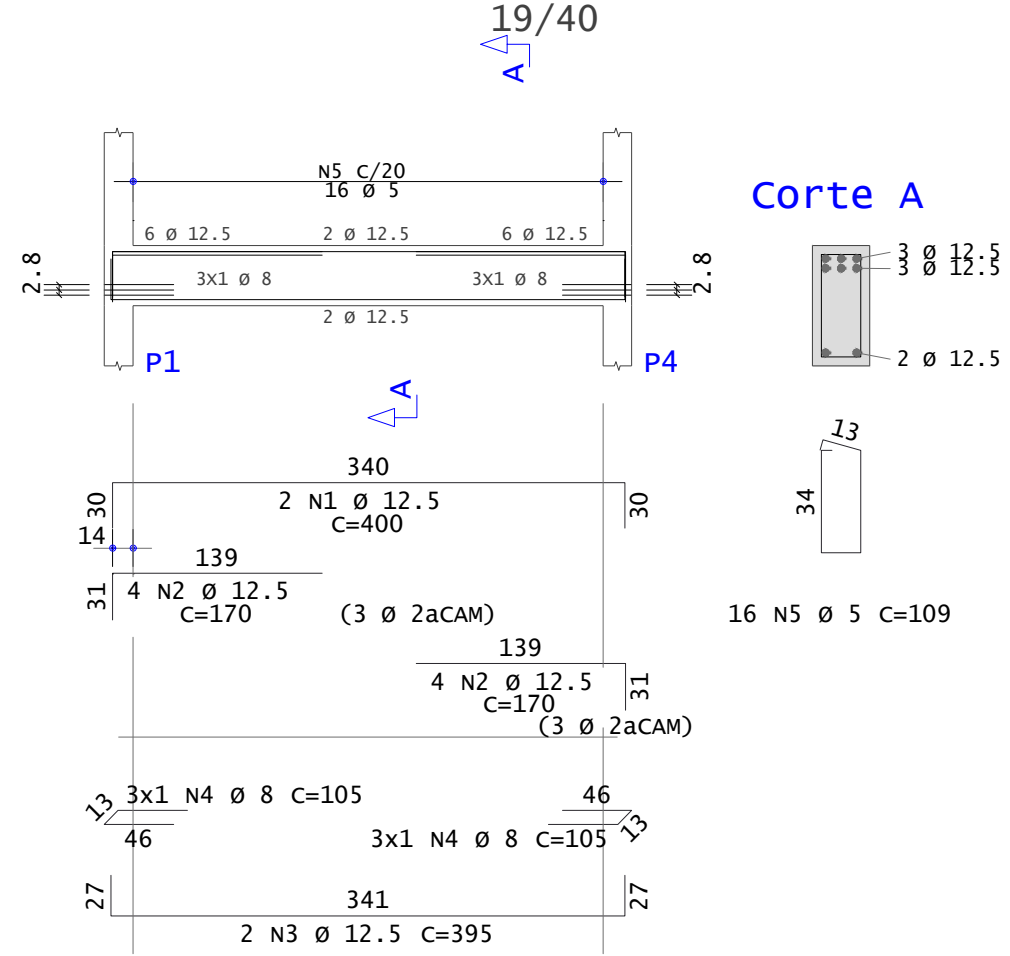
Forma Nível 4.50m



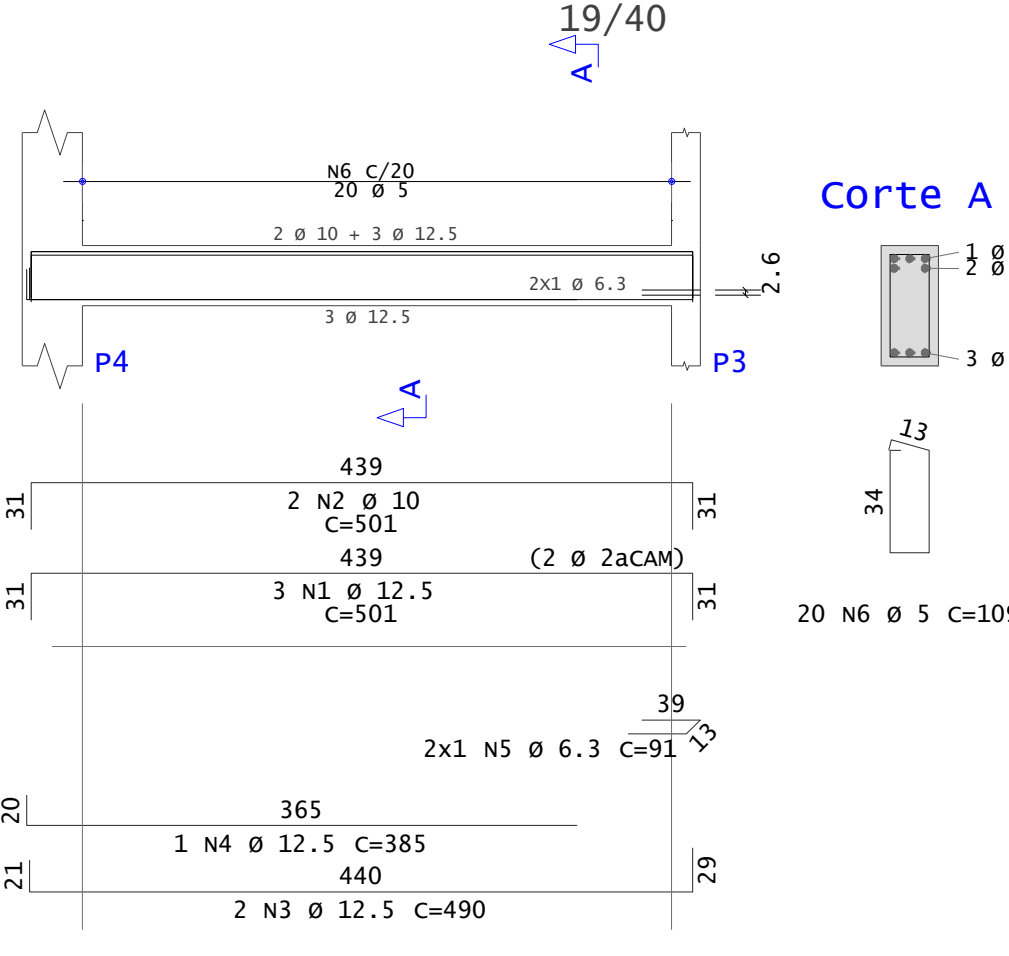
V1



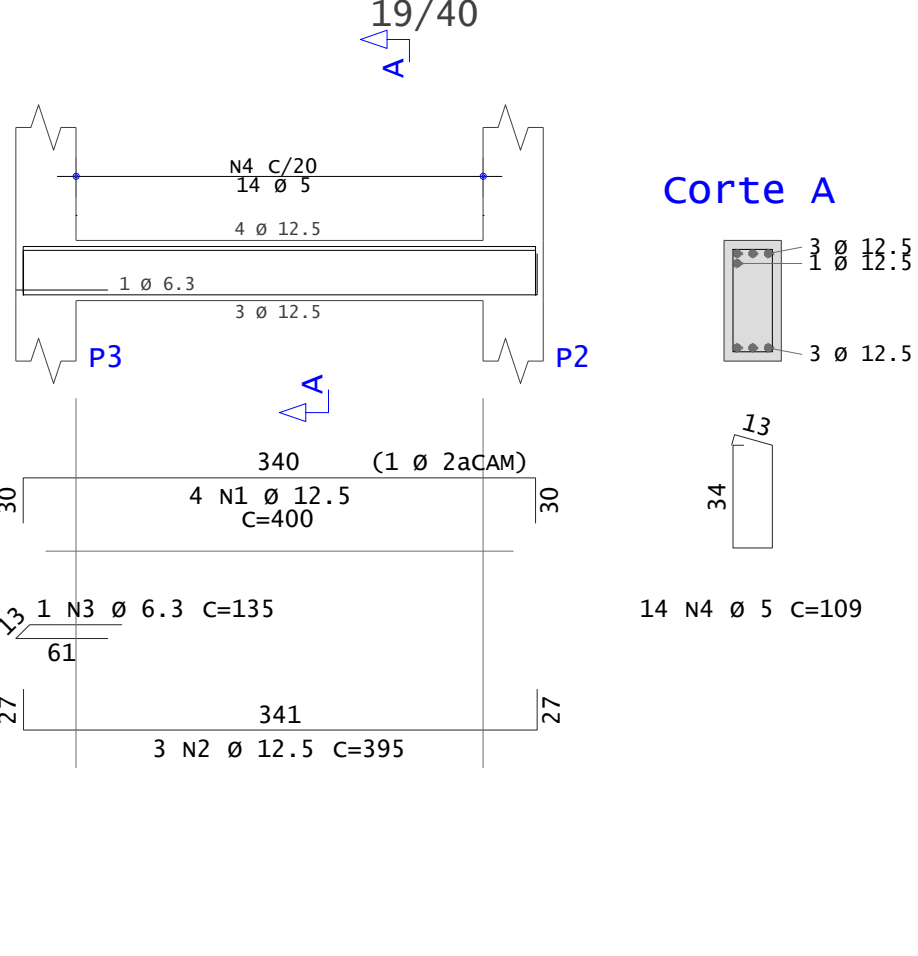
V2



V3

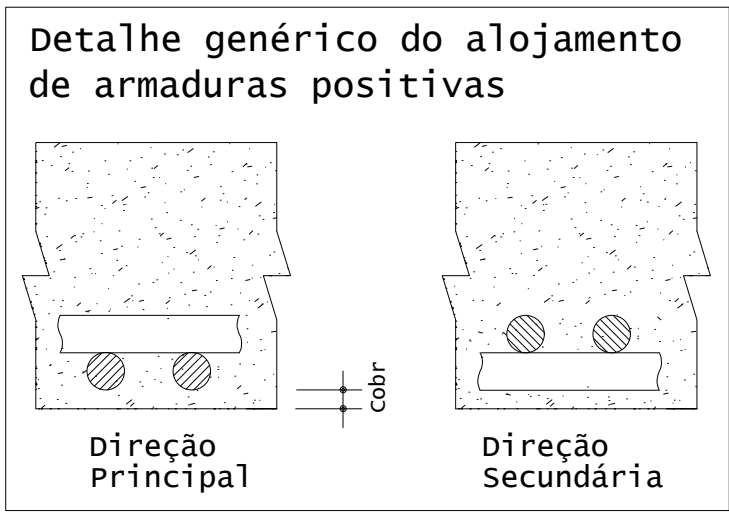
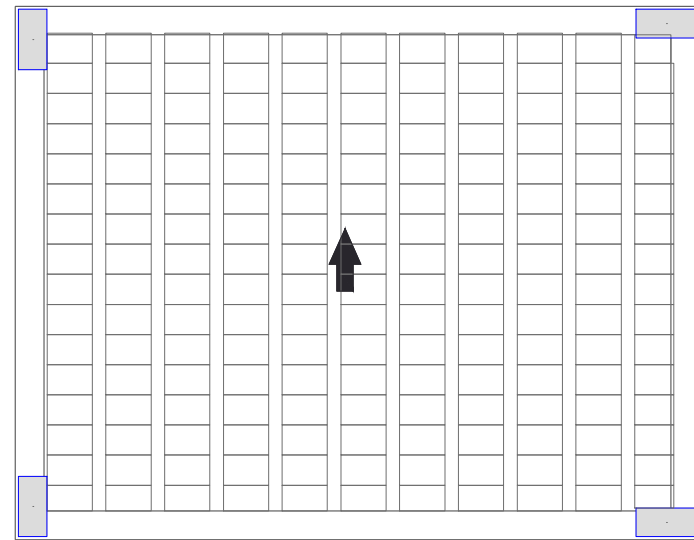


V4



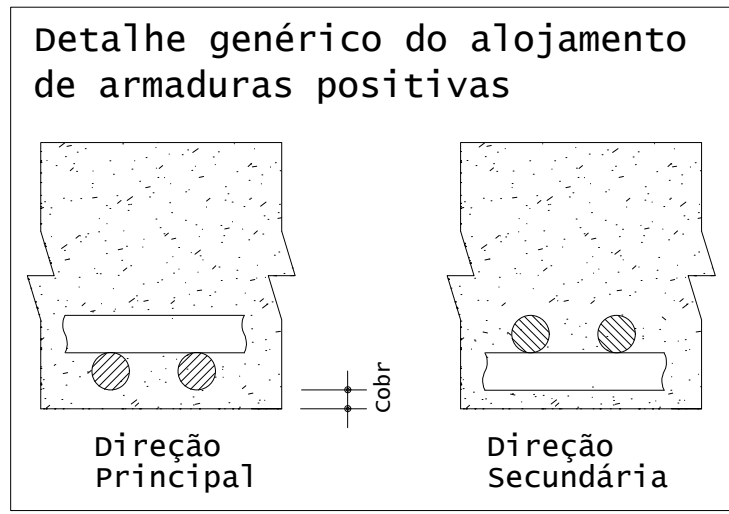
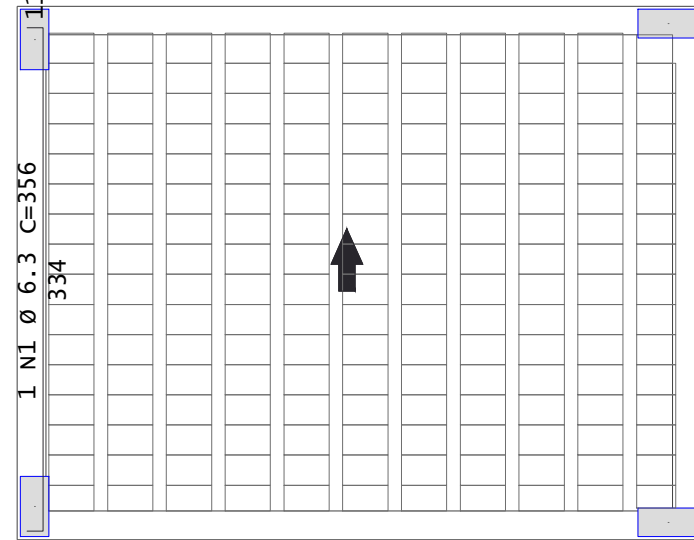
Nível 9.20 - Armadura positiva secundaria

1x

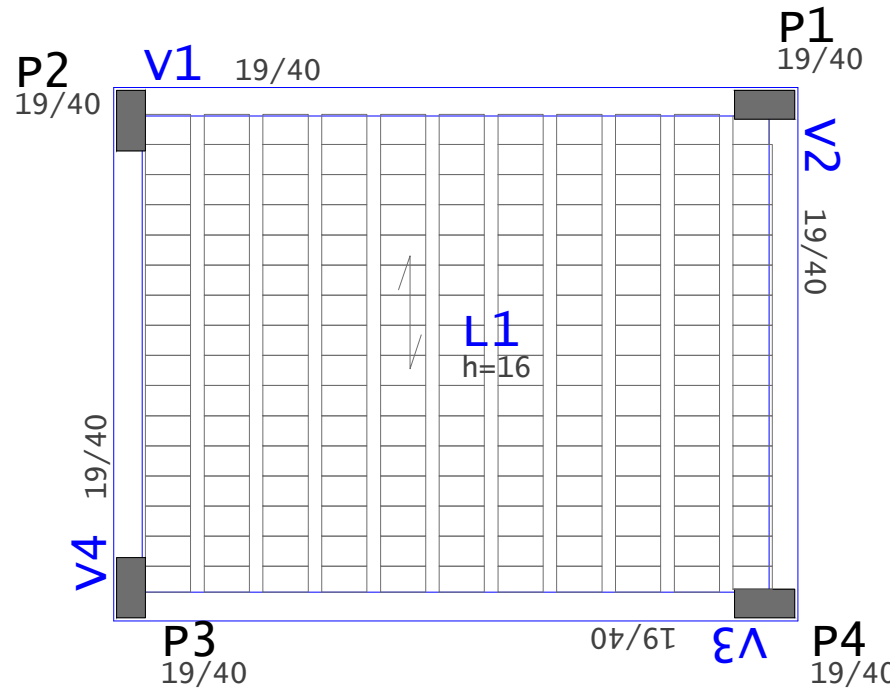


Nível 9.20 - Armadura positiva principal

1x

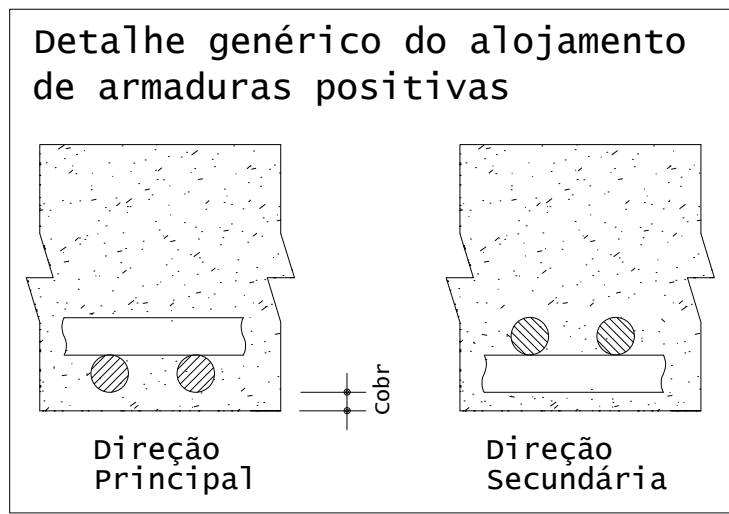
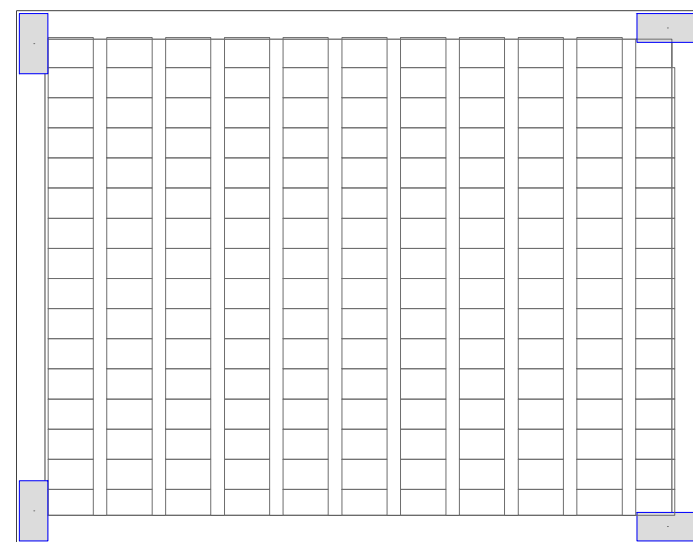


Forma Nível 9,20m



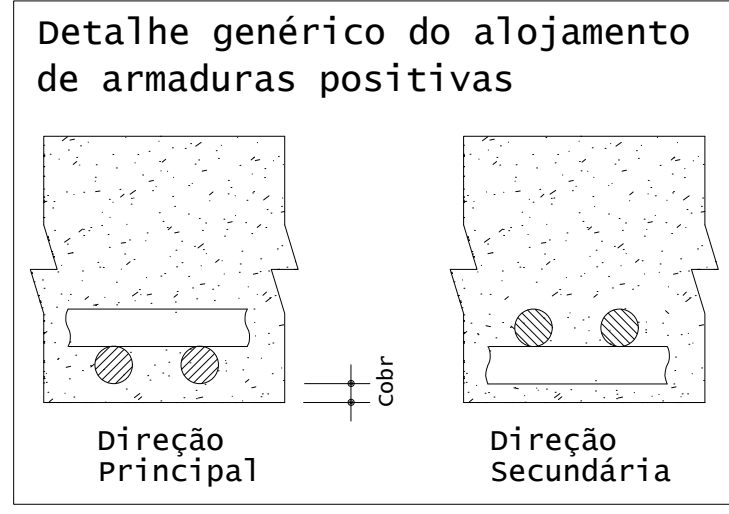
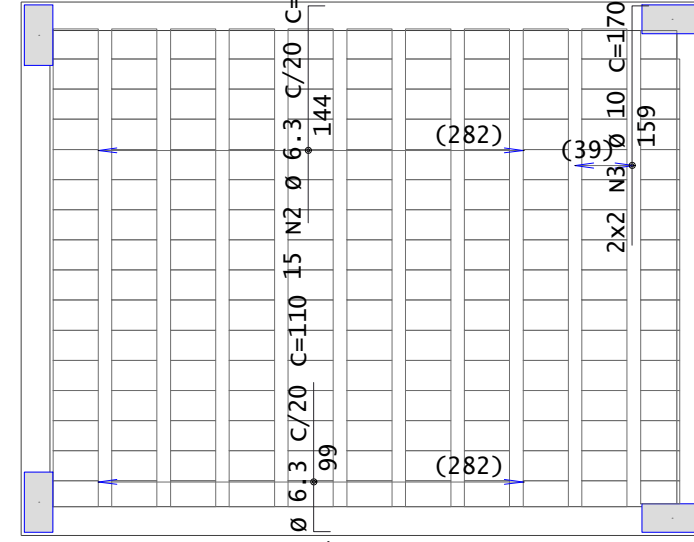
Nível 9.20 - Armadura negativa principal

1x

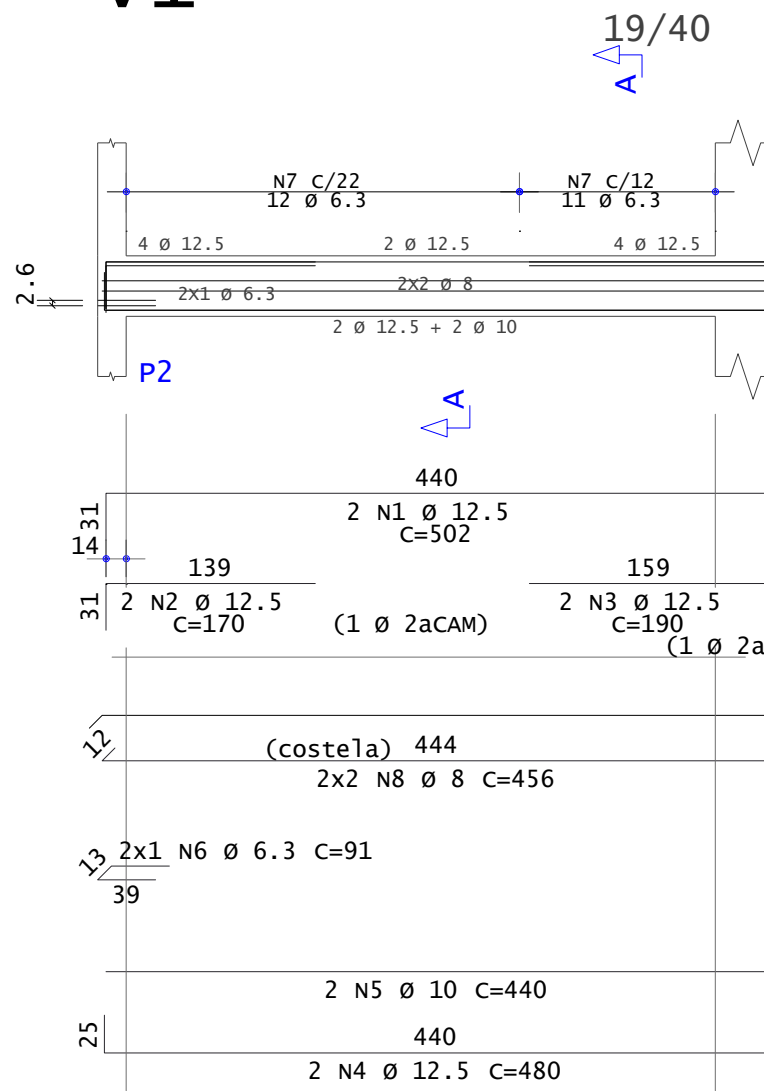


Nível 9.20 - Armadura negativa secundaria

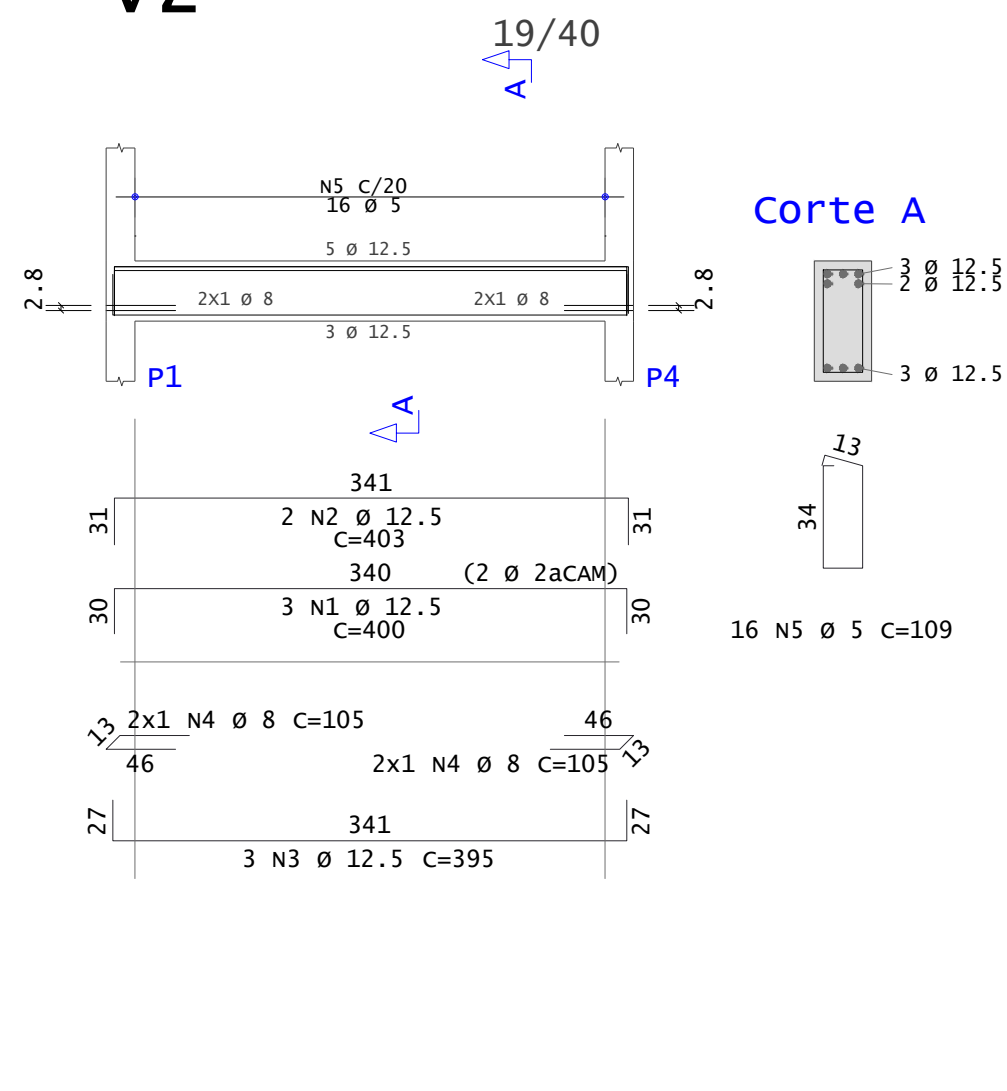
1x



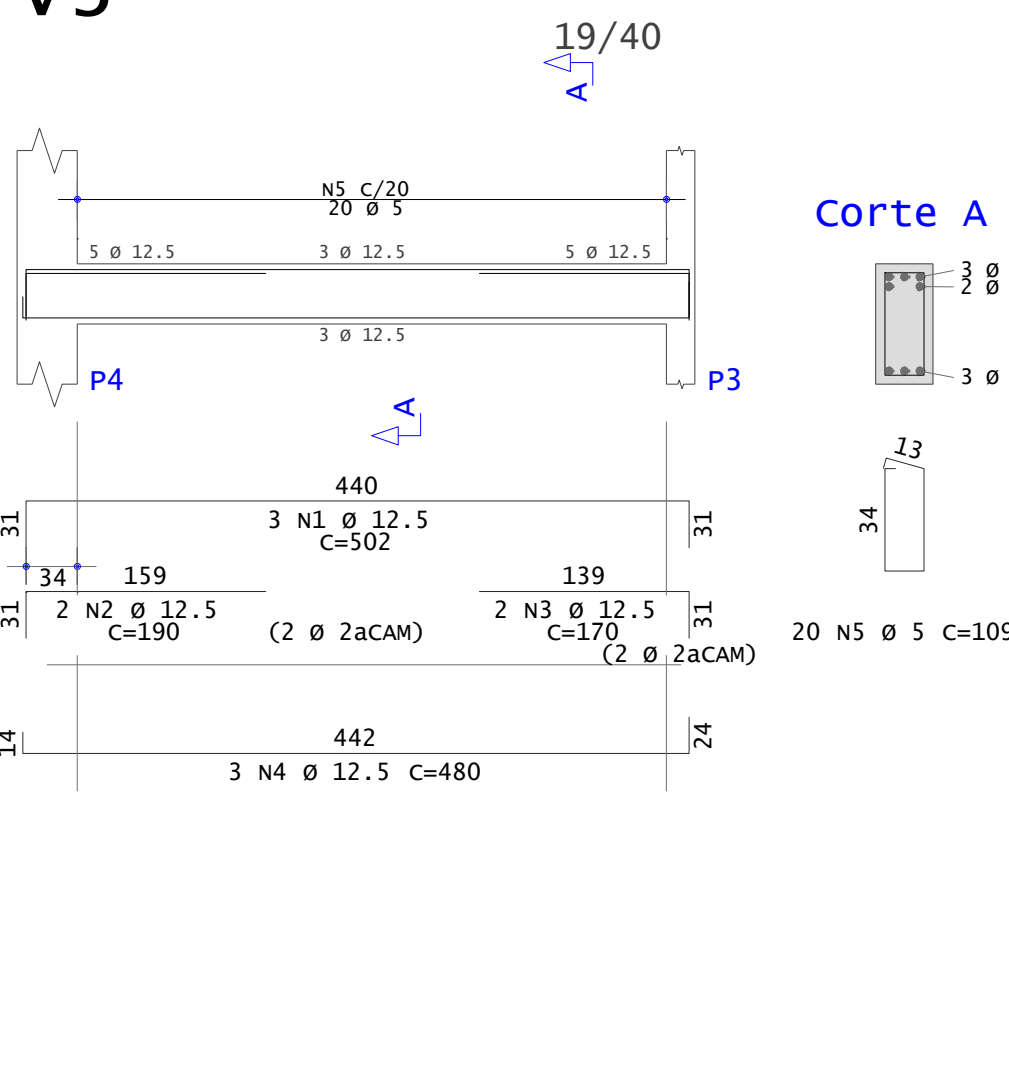
V1



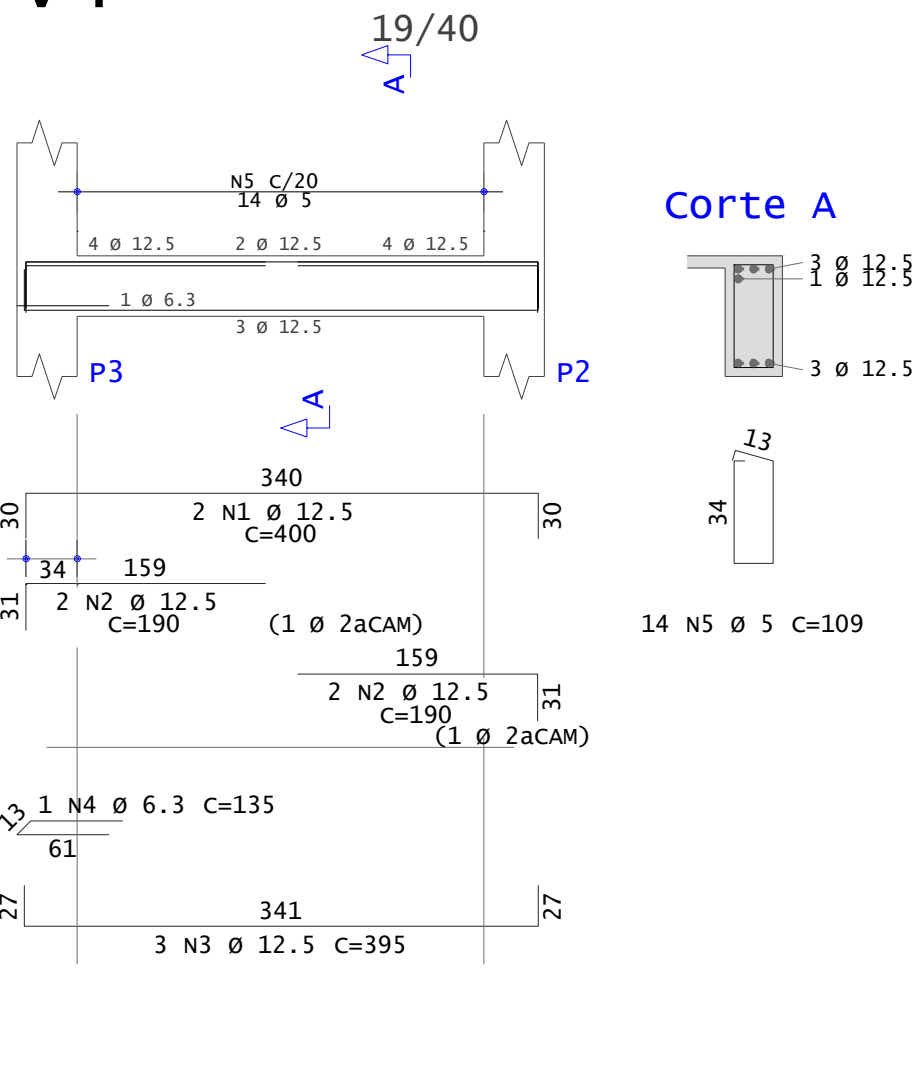
V2



V3



V4



	AÇO	POS	BIT	QUANT	COMPRIMENTO		
			mm		UNIT	TOTAL	
Nível	730	- Armadura negativa secundaria				cm	cm
V1	50A	2	6.3	15	110	1650	
	50A	2	6.3	15	155	2325	
	50A	3	10	4	170	680	
	50A	1	12.5	3	501	1503	
V1	50A	2	10	2	502	1004	
	50A	3	12.5	2	490	980	
	50A	4	12.5	1	390	390	
	60A	5	6.3	3	182	546	
V1	60A	6	5	20	109	2180	
	50A	1	12.5	2	502	1004	
	50A	2	12.5	2	170	340	
	50A	3	12.5	2	190	380	
V2	50A	4	12.5	2	480	960	
	50A	5	10	2	440	880	
	50A	6	6.3	2	91	182	
	50A	7	6.3	23	123	2829	
V2	50A	8	8	4	456	1824	
	50A	1	12.5	3	400	1200	
	50A	2	12.5	2	403	806	
	50A	3	12.5	3	395	1185	
V2	50A	4	8	4	105	420	
	60A	5	5	16	109	1744	
	50A	1	12.5	2	400	800	
	50A	2	12.5	8	170	1360	
V3	50A	3	12.5	2	395	790	
	50A	4	8	6	105	630	
	60A	5	5	16	109	1744	
	50A	1	12.5	3	501	1503	
V3	50A	2	10	2	501	1002	
	50A	3	12.5	2	490	980	
	50A	4	12.5	1	385	385	
	50A	5	6.3	2	91	182	
V3	60A	6	5	20	109	2180	
	50A	1	12.5	3	502	1506	
	50A	2	12.5	2	190	380	
	50A	3	12.5	2	170	340	
V4	50A	4	12.5	3	480	1440	
	60A	5	5	20	109	2180	
	50A	1	12.5	4	400	1600	
	50A	2	12.5	3	395	1185	
V4	50A	3	6.3	1	135	135	
	60A	4	5	14	109	1526	
	50A	1	12.5	2	400	800	
	50A	2	12.5	4	190	760	
V4	50A	3	12.5	3	395	1185	
	50A	4	6.3	1	135	135	
	60A	5	5	14	109	1526	

RESUMO DE AÇO			
AÇO	BIT	COMPR	PESO
		mm	m
60A	5	131	20
50A	6.3	76	19
50A	8	29	11
50A	10	36	22
50A	12.5	238	229
Peso Total		60A =	20 kgf
Peso Total		50A =	281 kgf